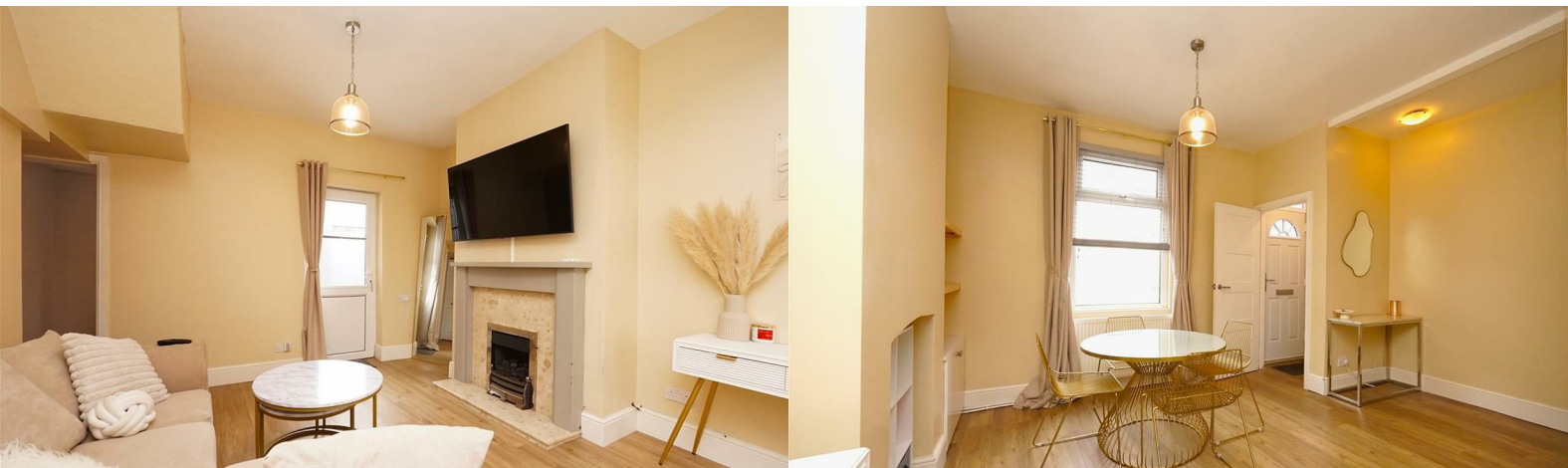




25 Provincial Street

Barrow-In-Furness, LA13 9PQ

Offers In The Region Of £117,500



25 Provincial Street

Barrow-In-Furness, LA13 9PQ

Offers In The Region Of £117,500



This delightful terraced house offers a perfect blend of comfort and convenience. With two well-proportioned bedrooms, this property is ideal for small families, couples, or individuals seeking a cosy home and presents a wonderful opportunity for anyone looking to settle in a vibrant area with a strong sense of community. Whether you are a first-time buyer or seeking a rental property, this home is sure to meet your needs and expectations.

As you step through the front door, you're welcomed into a spacious and well-lit dining area that flows seamlessly into a cosy yet generous lounge. Natural light pours in through large windows at both ends, creating a bright and inviting atmosphere perfect for relaxing or entertaining. Toward the rear of the home, the fresh and modern kitchen is fitted with sleek cabinetry and contemporary fixtures, offering plenty of workspace and functionality for everyday living. From here, you can step out into a low-maintenance outdoor space, ideal for enjoying some fresh air with minimal upkeep — perfect for morning coffee, weekend barbecues, or simply unwinding in private. Upstairs, the property continues to impress with a stylish and contemporary bathroom featuring quality finishes and a clean, modern design. The large main bedroom offers plenty of space for a king-size bed and additional furnishings, providing a peaceful retreat at the end of the day. The second bedroom is also generously sized, making it ideal for a child's room, guest space, or home office. Situated in a vibrant neighbourhood with a strong sense of community and easy access to local amenities, shops, schools, and transport links, this charming home on Provincial Street presents a wonderful opportunity to settle into a warm and welcoming area that truly feels like home.

Entrance Vestibule

Lounge Diner

20'5" x 14'9" (6.23 x 4.52)

Kitchen

16'2" x 6'7" (4.93 x 2.03)

First Floor Landing

extends to 10'7" (extends to 3.24)

Bedroom One

10'10" x 9'10" (3.31 x 3.02)

Bedroom Two

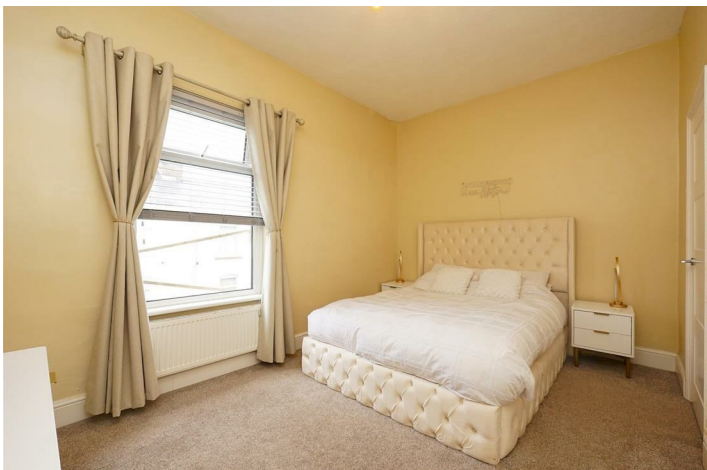
15'0" x 9'5" (4.59 x 2.89)

Bathroom

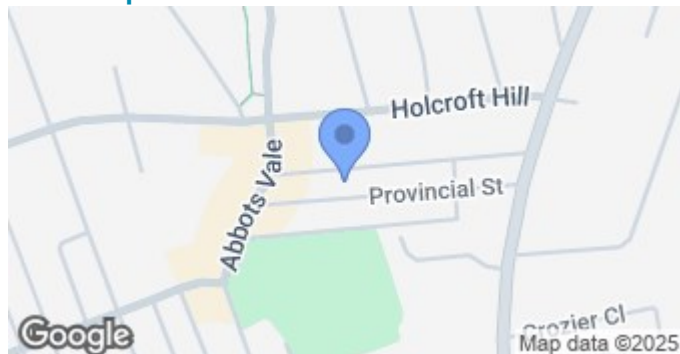
6'11" x 6'7" (2.13 x 2.02)



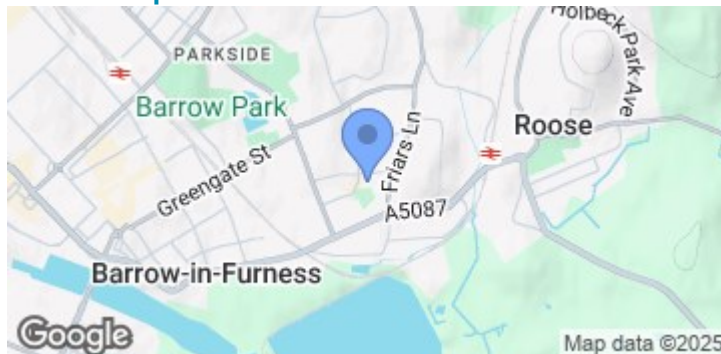
- Ideal for First time Buyers
- Tasteful Decor Throughout
 - Rear Yard
 - Gas Central Heating
- Convenient Location
- Close to Amenities
 - Double Glazing
 - Council Tax Band - A



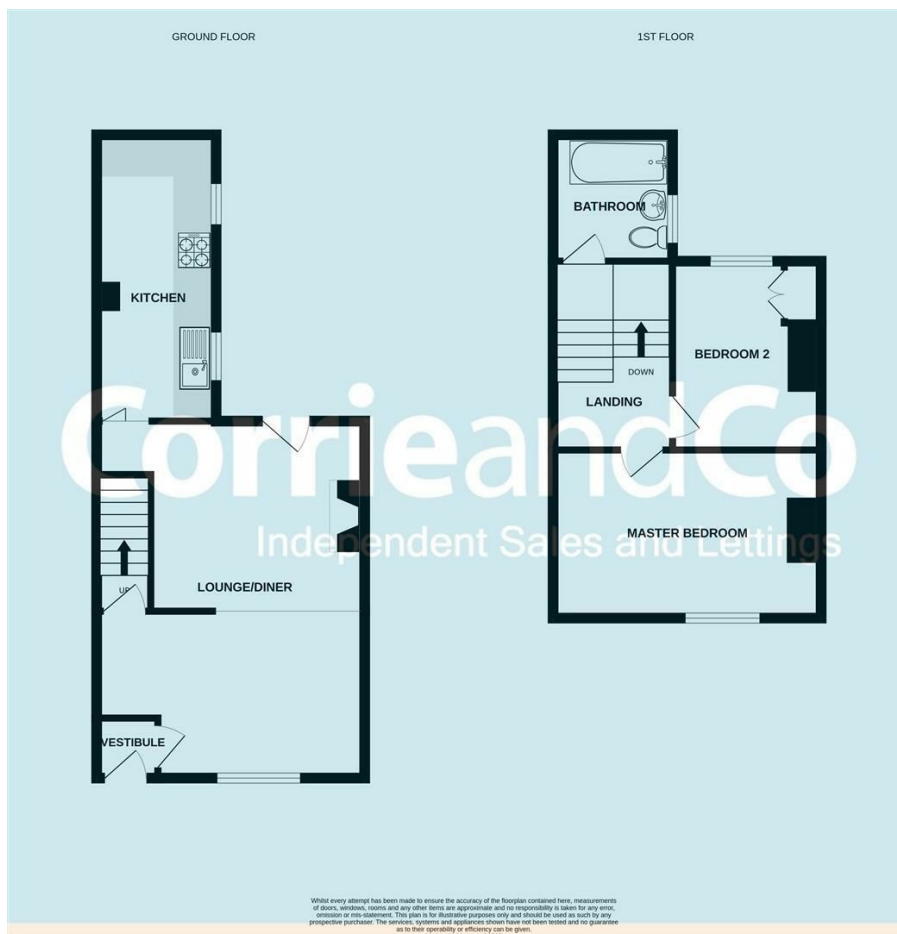
Road Map



Terrain Map



Floor Plan



Corrie and Co aim to sell your property, at the best possible price, in the shortest possible time. We have developed a clear marketing strategy, over many years, to ensure your property is exposed to all social media platforms, Rightmove, Zoopla and our own Corrie and Co website.

We also offer:

- Professional Photography
- Full promotion, throughout all our branches
- Experienced, qualified, friendly staff
- Full viewing service with feedback

To ensure your move is stress free, we can help with Mortgage advice. We work alongside local Solicitors, offering competitive conveyancing services.

We are local, family run business who are wholly independent which means we can recommend services to most suit your needs. Our aim is to provide quality advice and expertise at all times, so you can make an informed decision.

